

Developing Mountainbiking in English State Owned Forests

2nd Nature & Sports Euro'Meet
Liptovsky Mikulas (Slovakia)
October 2nd 2013

Paddy Harrop
Recreation and Public
Affairs Manager
Forestry Commission
England



The Public Forest Estate



day visits per year supporting and enabling a wide range of private businesses from over 80 small private franchises through to 14 Go Ape! sites.



hectares of the estate is designated as SSSI with 99% of this in favourable or recovering unfavourable condition.



businesses deliver most of our visitor centre services, cafe, bike hire and outdoor activities.



of the country's softwood timber production supporting hundreds of small contractors and large sawmills that rely on our guaranteed supply to attract capital investment.



England's forests



Rent a forest lodge: wild fun for the kids, and you get a hot-tub

A log cabin holiday offers endless adventure for the children, while you get a little slice of luxury, writes **Bibi van der Zee**

● **Advertisement feature:** Forest and relaxation



English forests: 20 ways to get closer to nature

Come for a picnic, build a den, watch for rare birds or stars in a crystal sky, hunt poisonous fungus, learn firecraft ... or just catch a nap

● England's forests: your 2013 summer of forest fun
● **Advertisement feature:** Exploring the treetops on one of Go Ape's courses



Wonderful woodland wildlife!

From ospreys to otters, red squirrels to red deer, a walk through an English forest will take you into a magical animal kingdom

● Get creative in the forest



Woodland watching tips

It's not difficult to spot wildlife in an English forest, but it helps to get up early and try to rediscover your predator instincts, explains **Patrick Barkham**

● Meet the ranger



If you go down to the woods at night

Leave your Hollywood preconceptions behind, forests are wonderful places to visit after dark, writes **Phil Daoust**

● Stargazing in England's forests – a Q&A guide



A brief history of trees

We had lots of trees, then came selfish kings and war. But now our forests are resurgent again, writes **Bibi van der Zee**

Sponsored by



theguardian

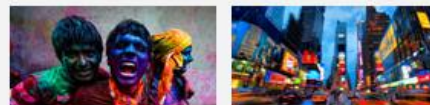
Win an iPad mini

Complete a short survey on mobile marketing and you could win an iPad mini

To view the survey and enter, click here >>

in association with **Adobe**

guardianholidayoffers



Find hand picked holidays for hundreds of destinations

Search

Today's best video



Pope delivers mass on Copacabana Beach
The pope greets almost 1 million people at Copacabana Beach in Rio de Janeiro, Brazil

Readers' top tips

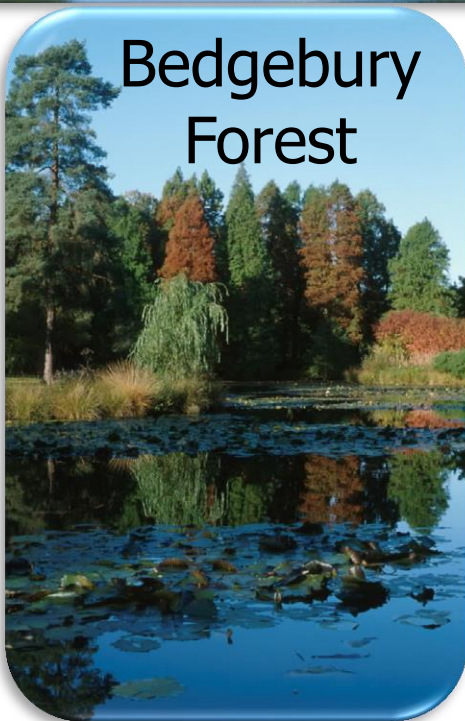




Dalby Forest



Bedgebury Forest





- 3597ha of woodland, grassland, fen and mire
- Within the North York Moors National Park
- Rich cultural heritage with almost 700 protected sites

Phase 1: Courtyard



Phase 2: Visitor Centre



Phase 3: Cycle Trails



£4.3M investment to:

- attract more visitors to the area throughout the year
- extend the length of time visitors spend at the site
- increase tourism spend in the local economy
- contribute to a wider understanding of the economic, environmental and social value of forestry
- provide the forest with a visitor centre built to a high specification using environmentally sustainable building techniques



- 11.8m people within 35 mile radius
- 815ha of mostly ancient woodland site
- High Weald AONB
- 1671 IUCN red list species within the Pinetum

£2.1m investment to

- increase access.
- develop potential for lifelong learning
- stimulate new interest in outdoor activities year round
- strengthen the local economy
- financially self-sustaining

Visitor hub, café and bike shop



Bike trails



Play trail

Dalby

- visit numbers up from 300,000 to 400,000 per year
- cycling visits have increased from 7% to 30%
- hosted MTB world Cup in 2009 & 2010

Bedgebury

- visitor numbers up from 40,000 to 270,000 per year
- tourism South East Sports Tourism Award 2007
- vibrant bike club and volunteers

Detailed economic analysis of the Dalby project:

- 20 jobs created and 70 volunteers deployed annually on the project.
- It is estimated that £2.2 million will be generated within the economy
- 41.52 full time equivalent jobs. The majority within the local area.





End

Paddy Harrop
Recreation and Public Affairs
Manager
Forestry Commission England